

Bumble Bees (*Bombus*)








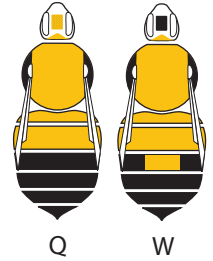
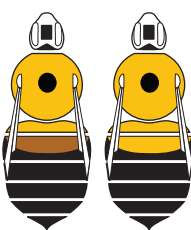


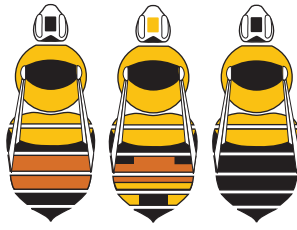

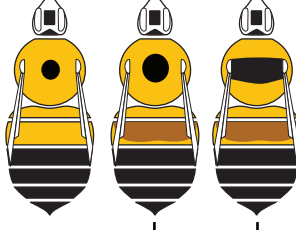


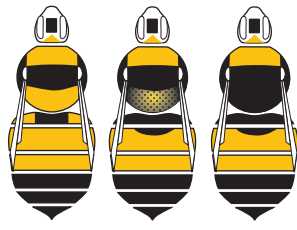
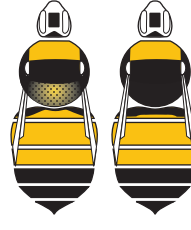




of Illinois, Missouri, Indiana and Ohio



beespotter.org

Females Look for females April through August.

Q = Queen W = Worker c = common throughout the region

<p><i>B. impatiens</i> Common eastern bumble bee</p>  <p>Jim Whitfield</p> <p>C</p> 	<p><i>B. bimaculatus</i> Two-spotted bumble bee</p>  <p>Jim Whitfield</p> <p>C</p> 	<p><i>B. vagans</i> Half-black bumble bee</p> <p>Very Small</p>   <p>Lynette Schimming</p>	<p><i>B. perplexus</i> Perplexing Bumble Bee</p> <p>Rare in Midwest</p>  <p>Jim Whitfield</p>  <p>Q W</p>
<p><i>B. griseocollis</i> Brown-belted bumble bee</p> <p>C</p>   <p>Amro Zayed</p>	<p><i>B. rufocinctus</i> Red-belted bumble bee</p>  <p>Terry Miesle</p>   <p>Terry Miesle</p>	<p><i>B. affinis</i> Rusty-patched bumble bee</p> <p>Endangered Species</p>   <p>Johanna James-Heinz</p>	
<p><i>B. auricomus</i> Black and gold bumble bee</p> <p>C</p>  <p>Thom Wilson</p> 	<p><i>B. pensylvanicus</i> American bumble bee</p>   <p>Thom Wilson</p>	<p><i>B. fervidus</i> Yellow bumble bee</p>   <p>Tai Rouston</p>	<p>WATCH OUT FOR THIS ONE!</p> <p>The Carpenter Bee, <i>Xylocopa virginica</i>, is often confused with bumble bee queens in the spring; note how similar the color pattern is to <i>Bombus impatiens</i>. One might consider this species of carpenter bee to be a mimic of <i>B. impatiens</i>.</p>  <p>Jim Whitfield</p>

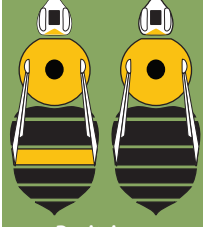
B. fraternus Southern plains bumble bee



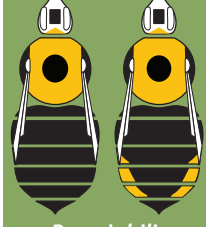
Cuckoo Bumble Bees

B. citrinus absent from MO

Rare, possibly extinct



B. citrinus



B. variabilis

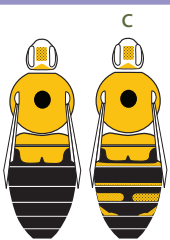


Lemon cuckoo bumble bee Variable bumble bee

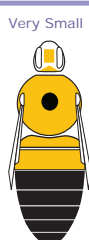
Males Look for males later in June through September.



B. impatiens



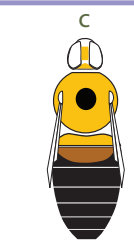
B. bimaculatus



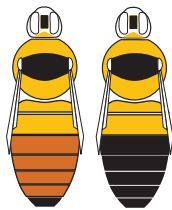
B. vagans



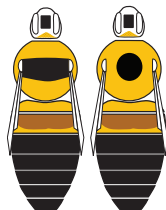
B. perplexus



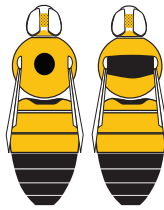
B. griseocollis



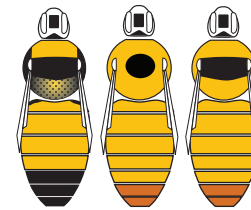
B. rufocinctus



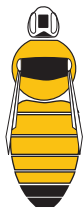
B. affinis



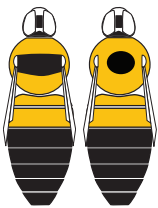
B. auricomus



B. pennsylvanicus



B. fervidus



B. fraternus



Cuckoo Bumble Bees

B. citrinus absent from MO

Rare, possibly extinct



Saint Louis Zoo
Animals Always